

**DIRECTION**

**MANAGEMENT TEAM**



**NURSING & MIDWIFERY**



**OUTPATIENT CARE**



**PGDip MHL<sup>1</sup>**



**PGDIP ID<sup>2</sup>**



**AMR LEARNING**

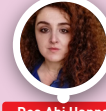


**TECHNICAL EXPERTISE**



**PEDAGOGICAL EXPERTISE**

**IMPLEMENTATION**



**NIGERIA  
GUINEA**

**SOUTH SUDAN**

**SOUTH SUDAN**

**SIERRA LEONE  
CENTRAL AFRICAN REPUBLIC  
YEMEN**

**SIERRA LEONE**

**MALI  
BURKINA FASO**



**SUPPORT**



<sup>1</sup>PGDip MHL stands for Postgraduate Diploma in Medical Humanitarian Leadership

<sup>2</sup>PGDip ID stands for Postgraduate Diploma in Infectious Diseases

\*Position contracted by Stellenbosch University